

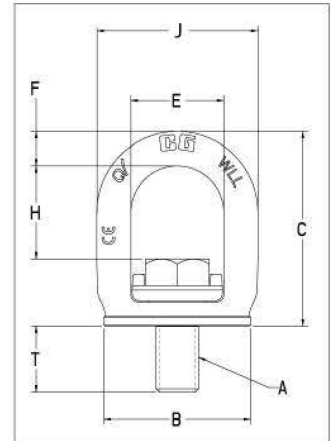


LIFTING POINTS

SL-150



- When compared to respective size eye bolts, the Crosby SL-150 Slide-Loc™ has a larger eye opening for easy access.
- Bail is forged alloy steel – Quenched & Tempered.
- Bail swivels 360° degrees to keep the load aligned with the sling leg.
- Rated at 100% for 90 degree angle.
- Fatigue rated to 20,000 cycles at 1-1/2 times the Working Load Limit.
- Meets the Machinery Directive 2006/42/EC guidelines and is marked with CE accordingly.
- Bolt specification for metric bolt is Grade 10.9 alloy cap screw to ISO 898-1.
- Unique locking mechanism makes the lifting point well suited for quick attachment to load surface. No need for tools.
- Features QUIC-CHECK® markings on bail to assist in knowing when device is ready for lifting.



APPLICATION AND WARNING INFORMATION SECTION 17



SL-150 UNC SLIDE-LOC™ LIFT POINT

Weight Each (kg)	Stock No.	Working Load Limit (t)*	Bolt Size A (in)	Dimensions (mm)						Effective Thread Projection Length T
				B	C	E	F	H	J	
0.14	1068407	0.50	3/8 - 16 x 1	35.6	53.1	27.9	8.4	28.2	45.0	15.2
0.24	1068416	0.75	1/2 - 13 x 1 - 1/4	42.4	62.7	33.0	10.4	33.0	54.1	20.1
0.50	1068425	1.50	5/8 - 11 x 1 - 5/8	55.1	75.7	37.1	13.2	37.1	63.5	25.7
0.93	1068434	2.30	3/4 - 10 x 2	68.8	91.2	43.7	16.0	43.7	75.7	32.0
0.98	1068443	2.30	7/8 - 9 x 2	68.8	91.7	43.7	16.0	43.7	75.7	31.2
1.69	1068452	3.20	1 - 8 x 2 - 1/2	82.6	110.0	52.8	19.3	49.0	91.2	40.4

4:1 Design Factor.

SL-150 METRIC SLIDE-LOC™ LIFT POINT

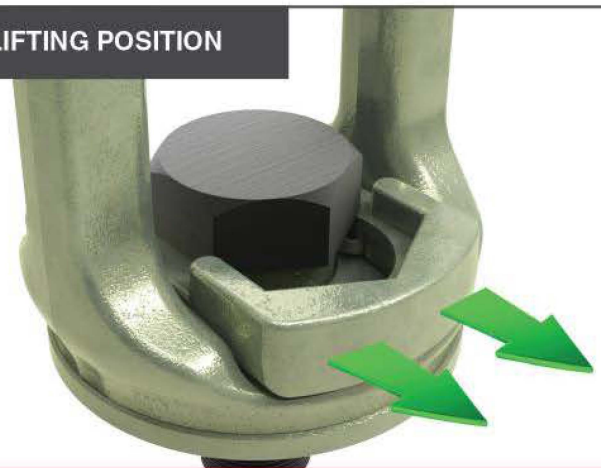
Weight Each (kg)	Stock No.	Working Load Limit (t)*	Bolt Size A	Dimensions (mm)						Effective Thread Projection Length T
				B	C	E	F	H	J	
0.14	1068515	0.50	M10X1.5 X 25	35.5	53.0	28.0	8.5	27.8	45.0	14.6
0.23	1068524	0.75	M12x1.75x30	42.5	62.6	33.0	10.5	32.9	54.0	18.3
0.50	1068533	1.50	M16x2x40	55.0	75.7	37.0	13.2	37.0	63.4	24.5
0.94	1068542	2.30	M20x2.5x50	68.8	91.1	43.9	16.0	43.6	75.6	31.0
1.60	1068551	3.20	M24x3x60	82.5	110.0	52.8	19.2	52.8	91.2	37.0

4:1 Design Factor.

INSTALLATION POSITION



LIFTING POSITION



The visible red QUIC-CHECK® mark indicates that the Crosby Slide-Loc™ is ready for installation but not for lifting.



When the red QUIC-CHECK® mark is under the slide, the Crosby Slide-Loc™ is ready for lifting.